

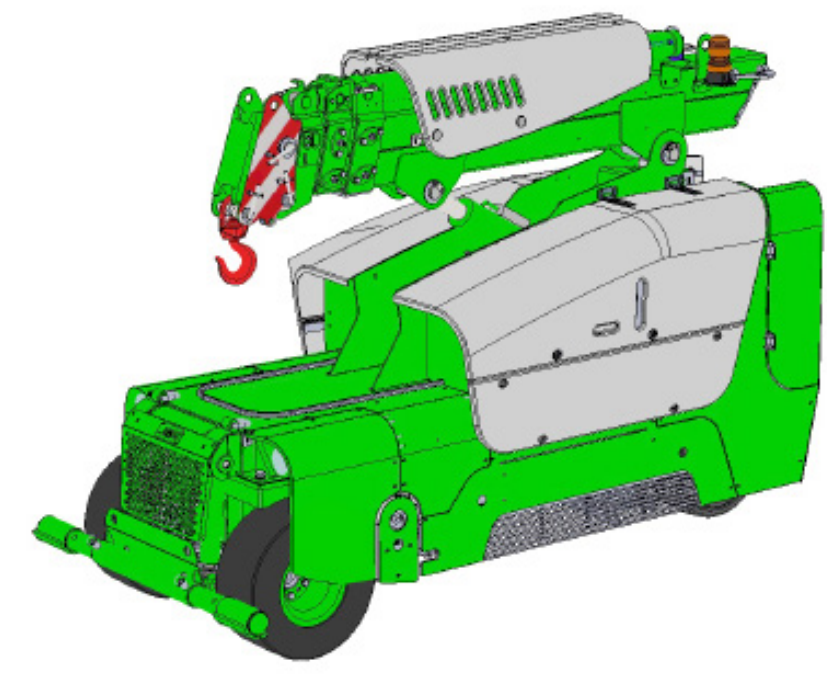
Data subject to change without prior notice
Edition 04/2020 © 2020 JMG Cranes S.p.A. All rights reserved
Rev.1 - 04/20



Electric Pick & Carry Cranes

JMG Cranes S.p.A.

Sales & Service Office
Via Bergamo, 142
26100 Cremona - Italy
t +39 0372 1786738
Production Plant
Via Sito Nuovo 14
29010 Sarmato (PC) - Italy
t +39 0523 8486
e info@jmgcranes.com



**SPEEDYLIFTER99
(metric)**
Max Capacity 1,300 kg

www.jmgcranes.com



SPEEDYLIFTER99

VACUUM, AS AN OPTION, FOR GLASS AND CRATES HANDLING
 FULLY RADIOCONTROLLED CRANE
 LITHIUM BATTERY

Options :

- BENDABLE MANUAL JIB
- HYDRAULIC WINCH
- SUCKER
- HYDRAULIC HANDLER
- NON-MARKING TIRES
- GARDEN WHEELS
- ATEX CONVERSIONS
- CUSTOMIZED PAINTING



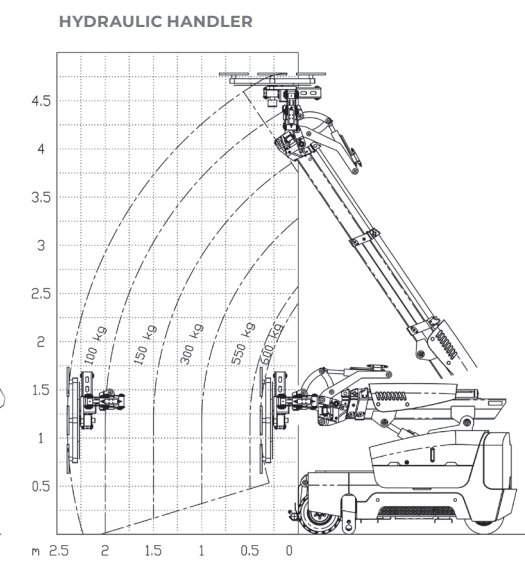
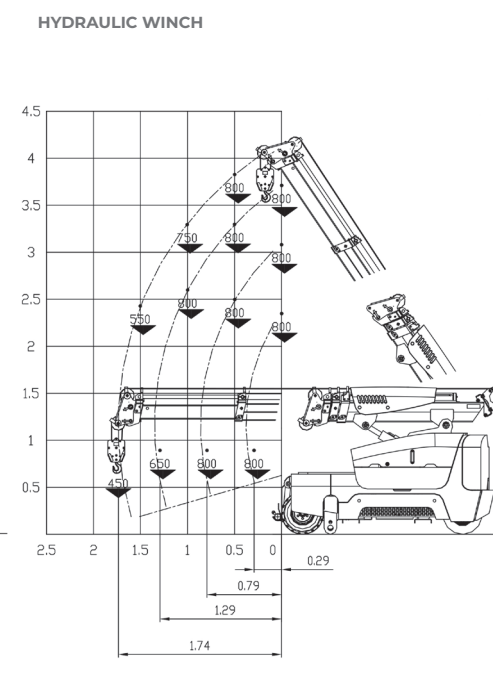
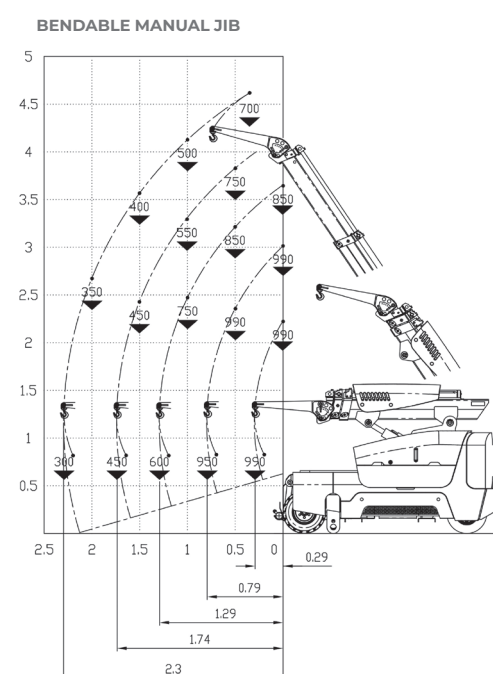
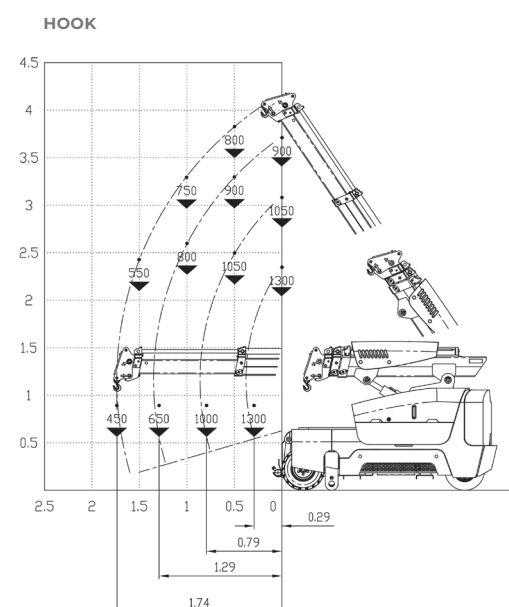
Technical features

Max Capacity kg	1,300
Dimensions mm	2357x840x1579

Front-wheels drive. 2 electric motors AC 2,5 kW 24V Insulation class H	Electronic Load Moment Indicator System
Total Kg. 1,550 Removable counterweights Kg. 400	Automatic braking system on all wheels
24 V - 200 Ah 8 working hours	Fabricated from preformed and welded quality steel plate
Front nr. 2 superelastic 16x6-8" Rear nr. 2 superelastic 15x4,5-8"	+56°/-16°
Rear Steering angle -90°/+90°	Electric motor 2,5 kW - 24 V AC, Insulation class H



Load charts



EU Standards CE

	UNI ISO 4301-2: A1
	2006/42 CE-2014/30 UE-2014/35 UE- 2000/14 e and subsequent modifications
	EN 13000:2014 ANSI/ASME B30.5-2011 and subsequent modifications



Dimensions

